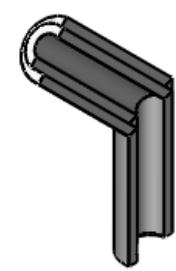
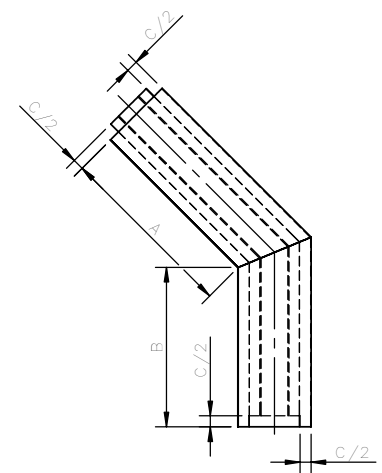


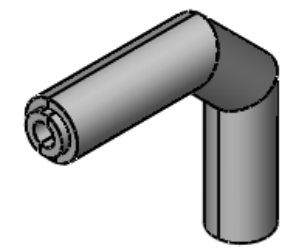
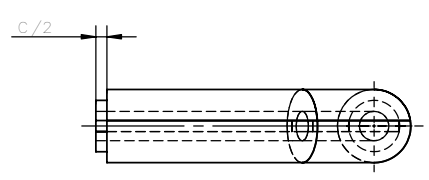
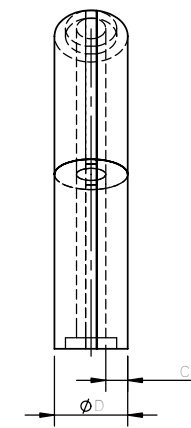
ISOMETRIC VIEW



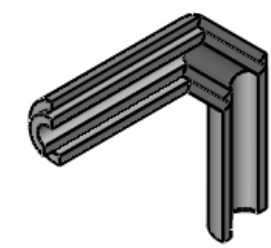
SPLIT ISOMETRIC VIEW



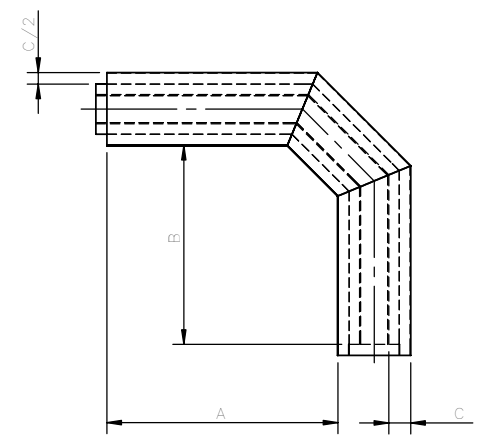
45° BEND



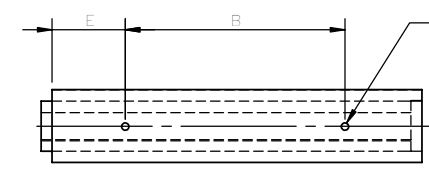
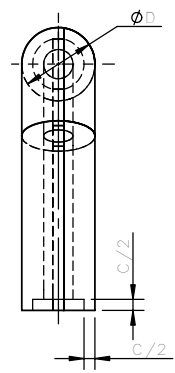
ISOMETRIC VIEW



SPLIT ISOMETRIC VIEW



90° BEND



STANDARD STRAIGHT WITH INSERTS IN ONE HALF



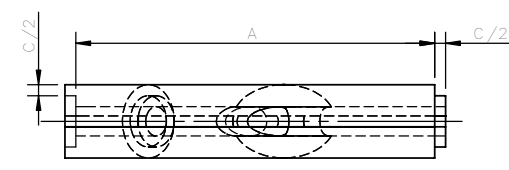
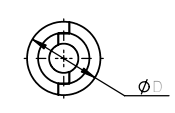
SPLIT ISOMETRIC VIEW



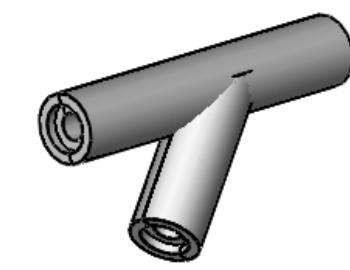
STANDARD STRAIGHT



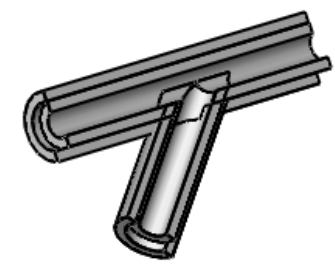
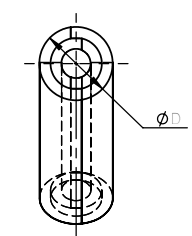
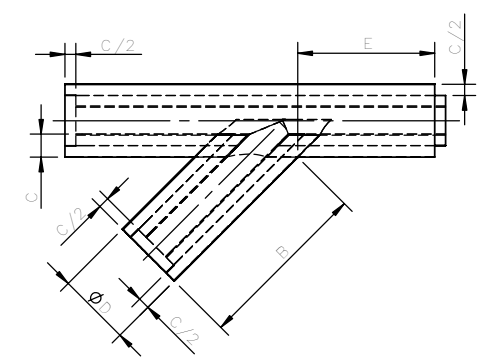
ISOMETRIC VIEW



45° TEE



ISOMETRIC VIEW



SPLIT ISOMETRIC VIEW

THIS DOCUMENT INCLUDING THE COPYRIGHT THEREIN IS THE EXCLUSIVE PROPERTY OF CALDER INDUSTRIAL MATERIALS, CHESTER, UK. IT MAY ONLY BE USED FOR THE PURPOSE FOR WHICH IT WAS ISSUED. IT MAY NOT BE DUPLICATED IN ANY WAY, NOR TRANSMITTED TO ANY THIRD PARTY WITHOUT THE EXPRESS PERMISSION OF CALDER INDUSTRIAL MATERIALS.

DRAWING No.	DESCRIPTION
ASSOCIATED DRAWINGS	

FINISH	GEN. TOLERANCE UNLESS OTHERWISE STATED
*	SUR. FIN : N7
*	LINEAR : JS14
*	ANGULAR : 0.25

SCALE 1 : 5
 ALL DIMENSIONS IN mm UNLESS OTHERWISE STATED



Jupiter Drive, Chester West Employment Park,
 Chester, CH1 4EX. Tel. No. 01244 390093

TITLE: LEAD PIPE SHIELDING			
DETAILS			
DRAWN	D.PARRY	21/07/04	
CHECKED	J.BENT	27/07/04	
APPROVED	D.TOMKINSON	27/07/04	
DRAWING No.	PROJ.No.	REV	
	N/A	1 of 1	00

REV	DESCRIPTION	APPROVED	DATE